



Shiva-Vishnu Temple

Om Namah Shivaya Om Namo Narayanaya

Hindu Community and Cultural Center

1232 Arrowhead Ave, Livermore, CA 94551

A Non-Profit Organization since 1977

Tax ID# 94-2427126; Inc #D0821589

Tel: 925-449-6255; Fax: 925-455-0404

Web: <http://www.livermoretemple.org>

Appeal to Devotees During Maha Kumbhabhishekam

BACKGROUND:-- The HCCC is pleased to inform you that on 5/10/10, City of Livermore approved our application to enhance facilities like paved parking on the south lot, additional restrooms, more storage, etc. The City has imposed operational constraints to mitigate noise, dust, and traffic congestion.

As you all know that the HCCC will be celebrating the 2nd Maha Kumbhabhishekam from June 16th to June 20th of 2010. We strongly urge your kind cooperation with Temple management on the following DOs and DO-NOTs when you visit the temple during these days and other times. Temple management is committed to provide road safety in the neighborhood. If you have suggestions, please contact Temple Manager.

DOs:

1. To reach the temple from 580 --- Exit *Vasco Road* - North, Left on *Scenic*, after 2 STOP signs turn left on *Arrowhead Ave*.
When you EXIT, Please go towards *Scenic Ave*. and turn right on *Scenic ave*.
2. Please Carpool with friends and family.
3. Please use HCCC parking ONLY.
On Saturday(6/19/10) an Sunday(6/20/10) of Maha Kumbhabhishekam, 2010 , there will be Off-site parking – Croce Elementary school on *Scenic Ave.*, etc.
There will be a temple **Shuttle** to the temple from these off-site parking..
4. Please obey Traffic personnel directions **on Maha Kumbhabhishekam Weekend**.
5. Inside the tents/temple, kindly make room for others.
6. When there are too many people in the Temple premises, and you want to leave, please have Darshan and collect your food Box before going home.
7. Provision for special access to physically challenged devotees.
Please contact a volunteer, if you need assistance.

DO-NOTs:

1. AVOID coming through *Wisteria Way*. This is a residential area.
So, from 580 do not take First Street Exit. But if you must drive through, please drive carefully, watching for pedestrians and following the traffic laws.
2. Please DO NOT Park on Streets. No parking on the side streets either. No Honking.
AVOID blocking neighborhood residents from leaving their driveways.
3. DO NOT throw Trash in the parking lots or on streets. NO dumping your garbage in neighbor's garbage Bins.

Please make visiting Temple, a wonderful experience. Please help us to, help you serve with better facilities.
May God Bless you !

HCCC Management.



Hindu Community and Cultural Center

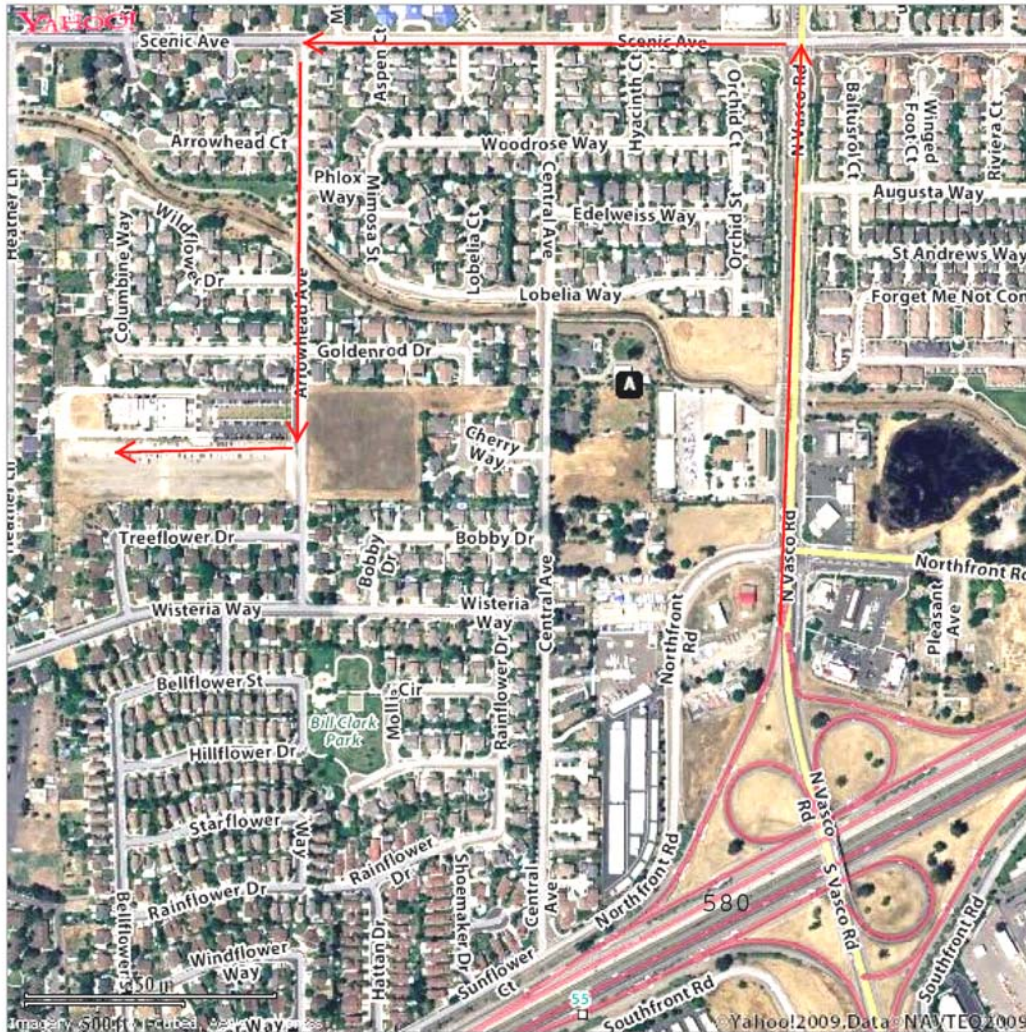
1232 Arrowhead Ave, Livermore, CA 94551

A Non-Profit Organization since 1977
Tax ID# 94-2427126; Inc #D0821589
Tel: 925-449-6255; Fax: 925-455-0404
Web: <http://www.livermoretemple.org>

Shiva-Vishnu Temple

Om Namah Shivaya Om Namo Narayanaya

Shiva-Vishnu Temple recommended Driving Directions **YAHOO!**



When using any driving directions or map, it's a good idea to do a reality check and make sure the road still exists, watch out for construction, and follow all traffic safety precautions.