



Shiva-Vishnu Temple

Om Namah Shivaya Om Namo Narayanaya

Hindu Community and Cultural Center

1232 Arrowhead Ave, Livermore, CA 94551

A Non-Profit Organization since 1977

Tax ID# 94-2427126; Inc #D0821589

Tel: 925-449-6255; Fax: 925-455-0404

Web: <http://www.livermoretemple.org>

CAR POOL

Please help us help you

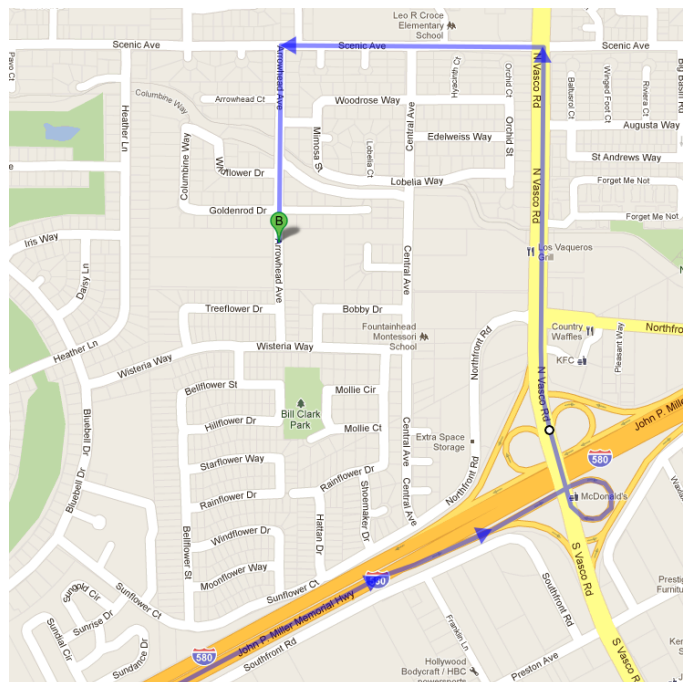
The Hindu Community and Cultural Center (HCCC) requests visitors to car pool when they visit the Shiva-Vishnu Temple in Livermore, California.

Car Pooling to the temple alleviates the parking congestion in the temple parking lots and will make your visit to the temple more comfortable and enjoyable.

The management of the HCCC requests you to follow the guidelines provided below.

1. Driving to the Temple from Hwy 580

- Exit at Vasco Road North
- Left at Scenic
- Left at Arrowhead Avenue and drive two blocks to the parking lot



(Please see the back page for the directions to Hwy 580 from the Temple)

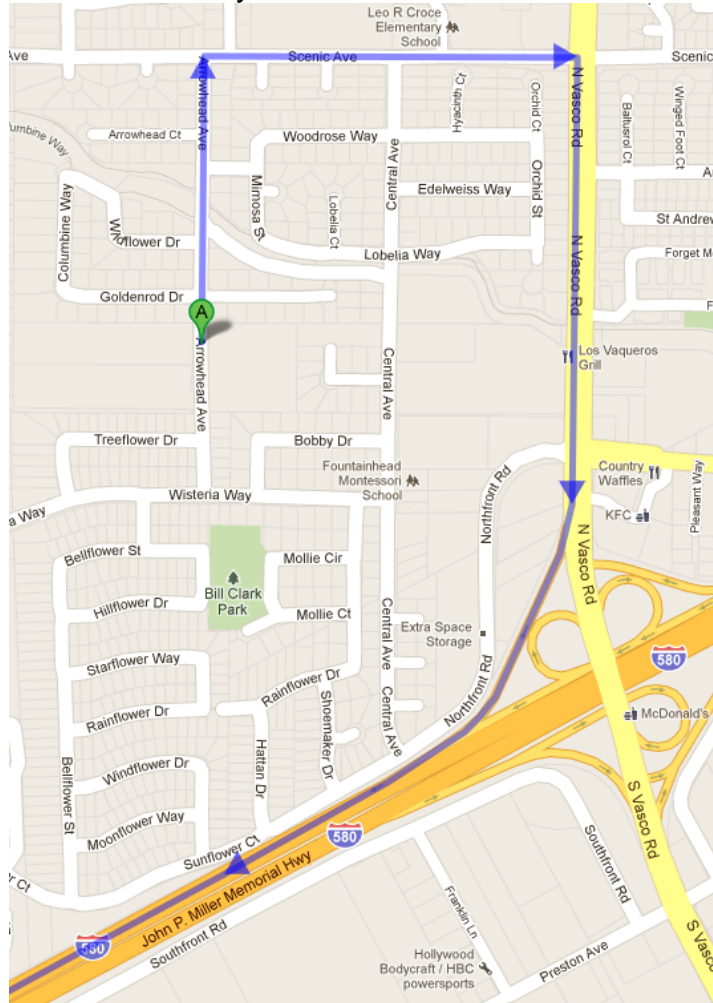
CAR POOL

Shiva-Vishnu Temple, Livermore

Please help us help you

2. Exiting the Temple

- Turn Left if you have parked at the same side of the Temple (West of Arrowhead Avenue) **OR** Turn Right if you have parked at the opposite side of the Temple (East of Arrowhead Avenue)
- Right at Scenic (T-intersection)
- Right at Vasco Road to Hwy 580



3. Parking Lot Attendants

- Strictly follow the directions provided by the parking attendant(s) on duty.

4. Littering

- Please use the garbage cans to dispose any unwanted items like lunch boxes, flyers etc. Please do not litter the parking lots or the City streets.